

# Lafayette Street:

Center Street to Ash Street



Center Street

Ash Street

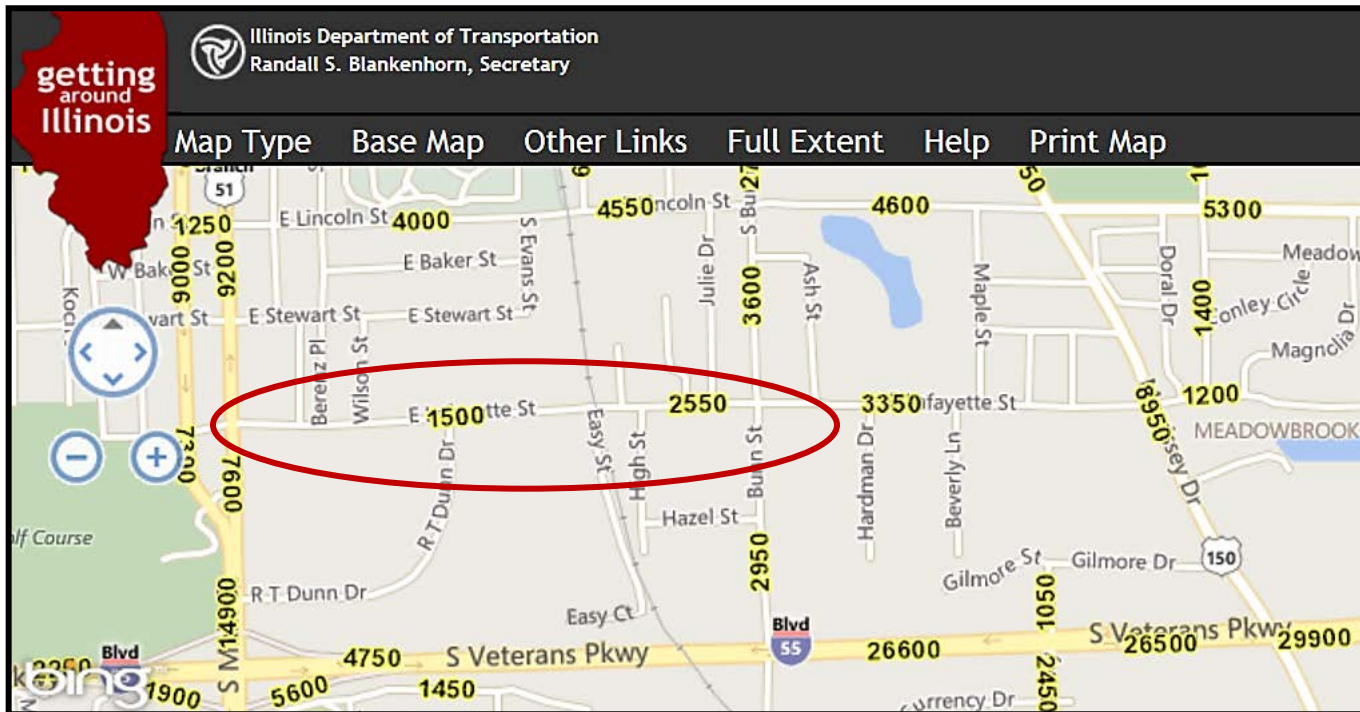
Lafayette Street

**Proposed  
Feasibility Study**

July 11, 2016

Jim Karch, PE, CFM  
Director of Public Works

# Numbers



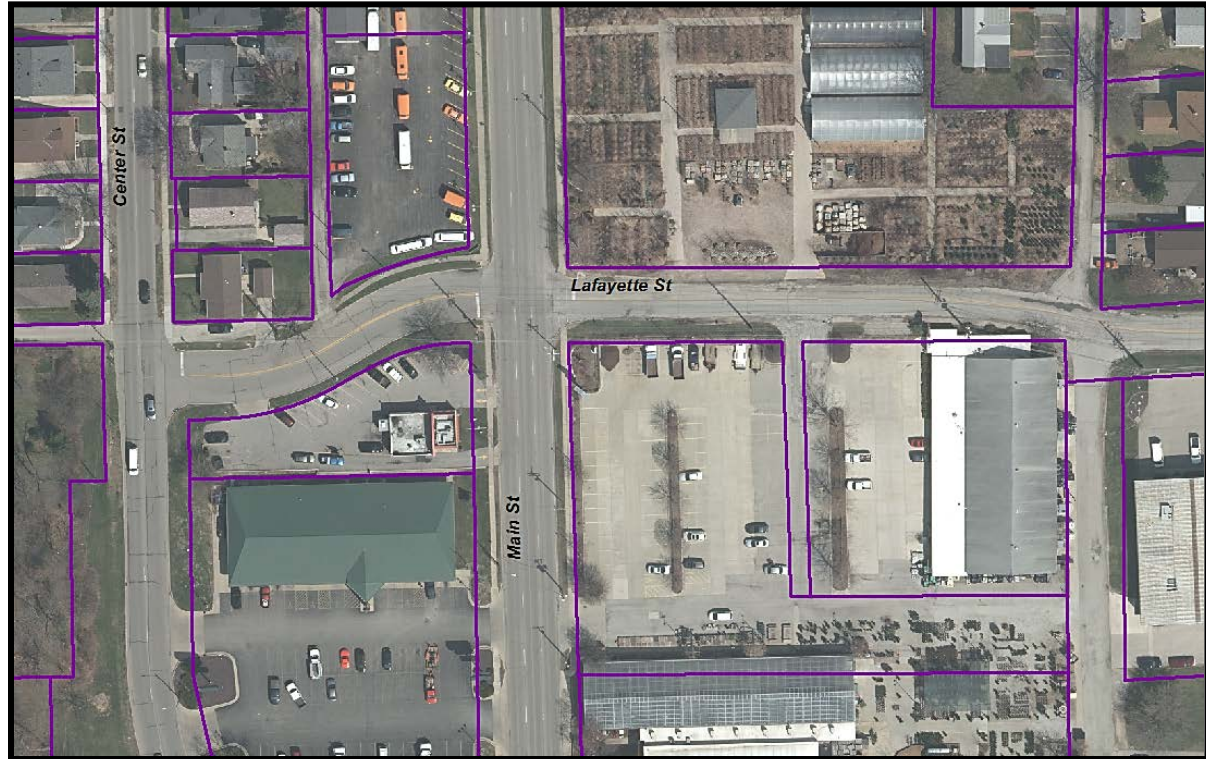
Area to study: Lafayette Street,  
Center Street to Ash Street  
3,800 feet  
Average daily traffic: 1,500-2,550

5-year crash history  
35 Collisions  
4 Injuries

Consultant: Farnsworth Group  
Funding: Local Motor Fuel Tax \$76,548

# An issue to resolve

Realignment and widening conflicts with commercial properties.



# Other Issues

- Are 2 traffic lanes or 3 lanes needed?
- Establishing pedestrian access.
- Storm sewer, curb and gutter.
- Utility conflicts.
- Right-of-way constraints.
- Cost Estimate for improvements.